

PAT400 Series – Uploading Data from Powersuite


How to Guide


This guide will show you how to upload data from Powersuite to your PAT400 series.

NOTE:

Make sure that all required data is downloaded from the PAT tester in the form of a .db file, this can be achieved by going to the “Data” tab and select back up to USB. Taking a backup of the data on your PAT is advised, because the uploading process will overwrite all data currently on the PAT tester.

Step 1-
Open Powersuite on your PC or laptop.

Step 2-
In the contact list expand to the location that you wish to upload by clicking the  next to the company name and client name.

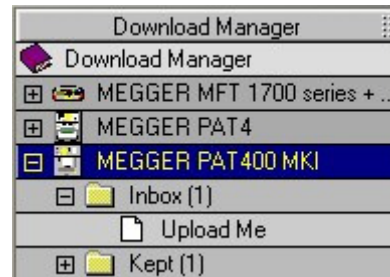
Step 3-
With the locations visible, drag the symbol of a house  onto the MEGGER PAT 400 MKI driver in download manager which is located in the bottom left corner.

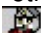
Step 4-
This will bring up a window asking which information you would like to upload. The first tick box is for if you only want to upload the contact information. The second tick box is to select assets within a specific date range.


Click continue to proceed

Step 5-
A window will open stating “You can now use the upload feature of the MEGGER PAT 400 MKI driver to upload the file.” Click ok.

Step 6-
In the inbox of the MEGGER PAT 400 MKI driver there will be a file called “Upload Me”.

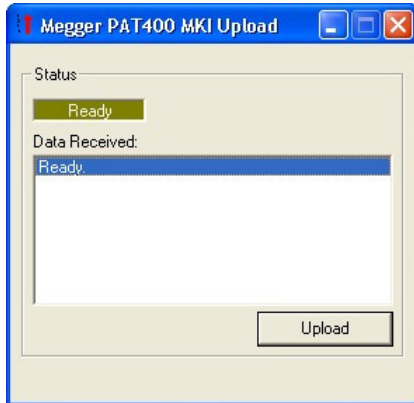


If there is further data for other locations that you wish to upload, drag the  symbol associated with these onto the MEGGER PAT 400 MKI.

Step 7-
Once all the locations have been added to the file, and with the MEGGER PAT 400 MKI driver selected (highlighted blue as shown in the above image), click the upload to tester button .

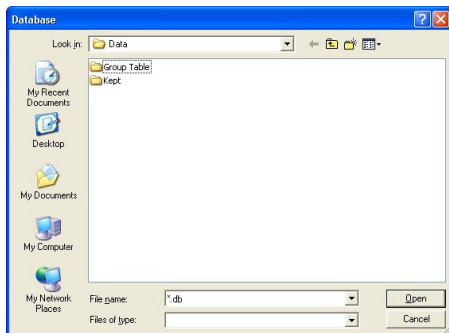
Step 8 –
A window will open where you will need to select the file to be uploaded. Select “Upload Me.csv” and click “Open”.

Step 9-
The following window will open,



Click "Upload"

Step 10-
The following window will open,



For the file name replace the x in the file name with what you would like to call the file, the file name can only be 8 characters long and you should make sure that the file ends with the .db suffix. Once ready click open.

Step 11-
Powersuite will now create a .db file for the selected data. Once completed open the stand alone version of Download Manager which can be done from the start menu, and double click on the driver for the PAT400 this will open the storage location where the file to be copied to the USB stick will be stored. Insert the USB memory stick for the PAT400 into the PC/Laptop. Open the window for the USB memory stick and copy and paste the .db file into this window.

Step 12-
Safely remove the USB memory stick from the computer and insert it into the PAT.

Step 13-
On the PAT navigate to the "Data" tab and select "Restore From USB". A drop down box will be shown where you can select the .db files stored on the USB memory stick. Highlight the correct one and push the ok button.

A warning that the upload process will overwrite all data on the PAT tester will be displayed. Push OK to continue. If there is data already on the tester that you need to keep, push the Esc button and do a backup to USB, then repeat the restore process.

A message will show stating that the upload is complete. Push "ok" to continue

If the file contains multiple data, the PAT 400 will ask what client and location you would like to set as the current client and location.

Choose your current client and location requirements, then your data will be available for use on the PAT 400.